

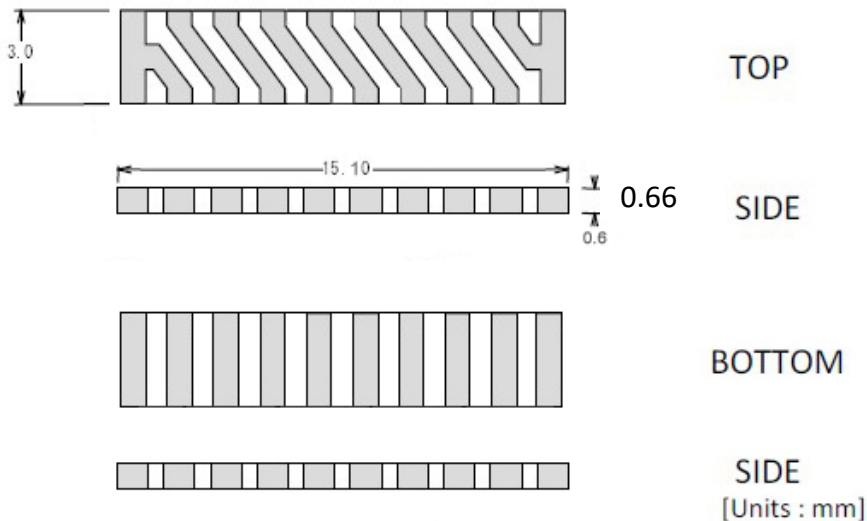
# SMD 陶瓷天線

433MHz

Model: WS-ANTSMD433

**Feature**

Frequency : 428~438MHz  
 Impedance : 50Ω  
 Dimension : 15.1×3.0×0.66mm  
 Omni-directional  
 High gain



**Applications**

Telemeter (Industrial & medical use),  
 Telecontrol Data communication,  
 Keyless entry system, ZigBee  
 Immobilizer system, Voice communication terminal,

< Evaluated board >

