
Wireless Hi Sensitivity Receiver Module (RF ASK)

**Version History**

Version	Date	Changes
V1.00	May.25, 2012	1 st . Edition

Model: RWS-371F-3 (315MHz)

- Frequency Range: 315MHz
- Modulate Mode: ASK
- Circuit Shape: LC
- Data Rate: 4800 bps
- Selectivity: -108 dBm
- Channel Spacing: $\pm 500\text{KHz}$
- Supply Voltage: 3.8~5.5V
- High sensitivity passive design.
- Simple to apply with low external count.

Electrical Characteristic

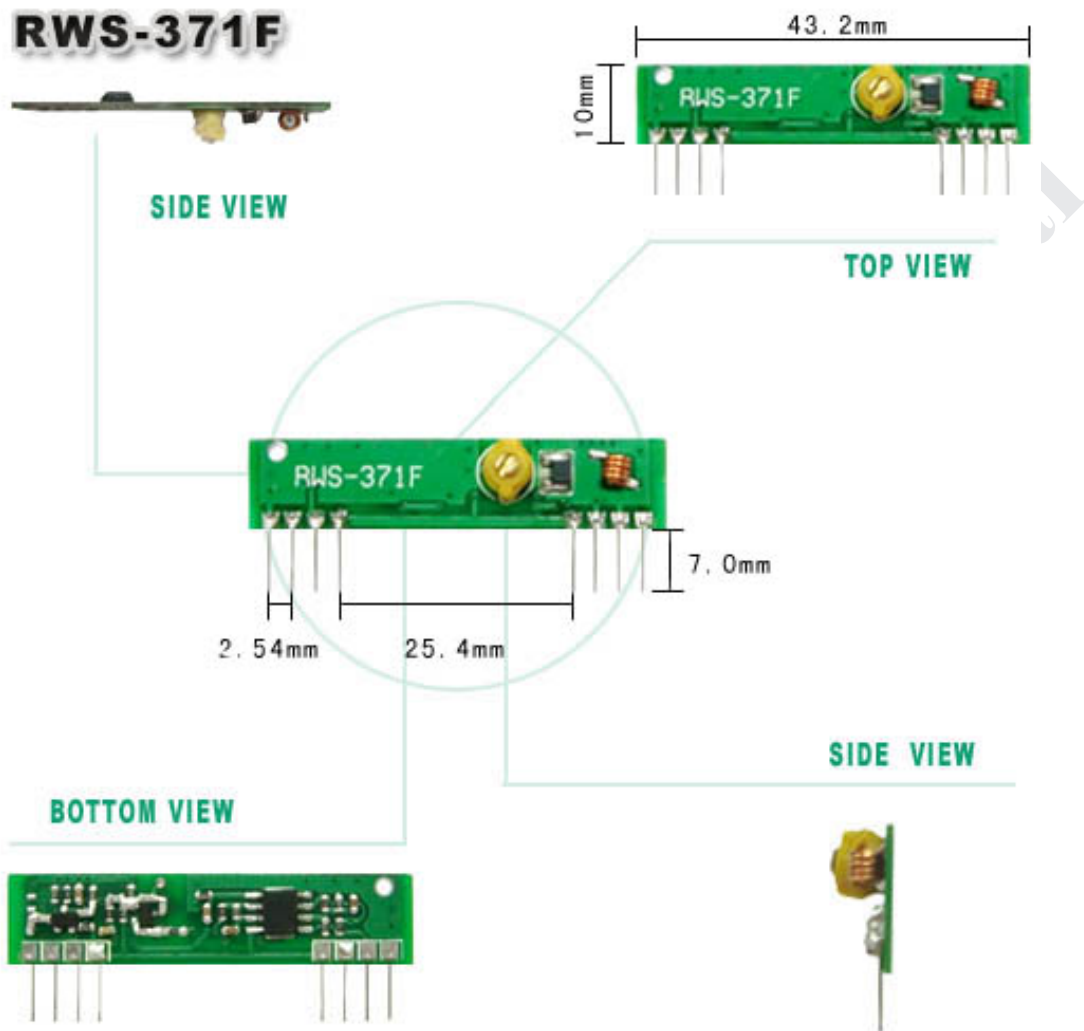
Characteristic	Sym	Min	Type	Max	Unit
Operating Radio Frequency	FC	314.5	315	315.5	MHz
Sensitivity	Pref.	-106	-108	-110	dBm
Channel Width		-500		+ 500	KHz
Noise Equivalent BW	NEB		5	4	
Baseband Data Rate				3	KB/S
Receiver Turn On Time				3	ms

DC Characteristic

Symbol	Parameter	Conditions	Min	Type	Max	Unit
Vcc	Operating Supply Voltage		3.8	5	5.5	V
I Tot	Operating Supply Voltage			4.5		
V Data	Data Out	1 Data = +200uA (High)	Vcc -0.5	Vcc		V
		1 Data = -10uA (Low)			0.3	V

Size

(unit : mm)



Pin Assignment

Pin	Function
1	GND
2	Digital Output
3	Linear Out
4	VCC
5	VCC
6	GND
7	GND
8	ANT(About 13cm)



<http://www.wenshing.com.tw> ; <http://www.rf.net.tw>

