

SMD Ceramic Antenna

433MHz

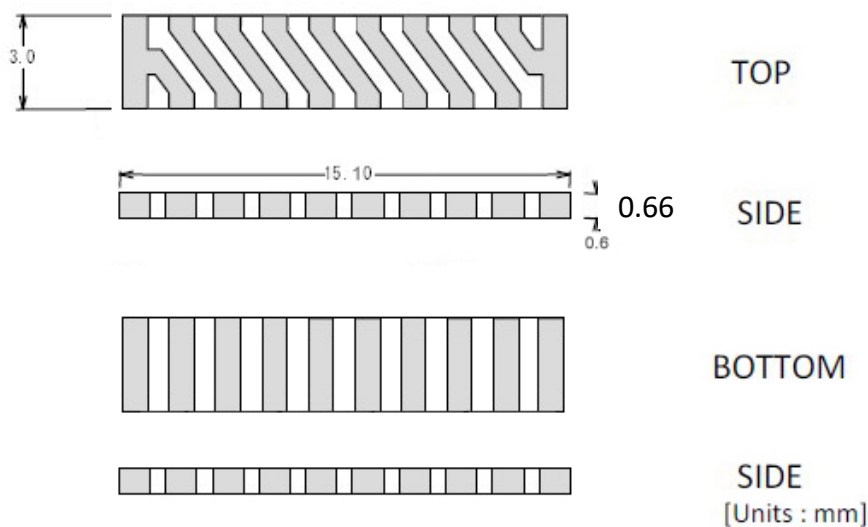
Model: WS-ANTSMD433

< Feature >

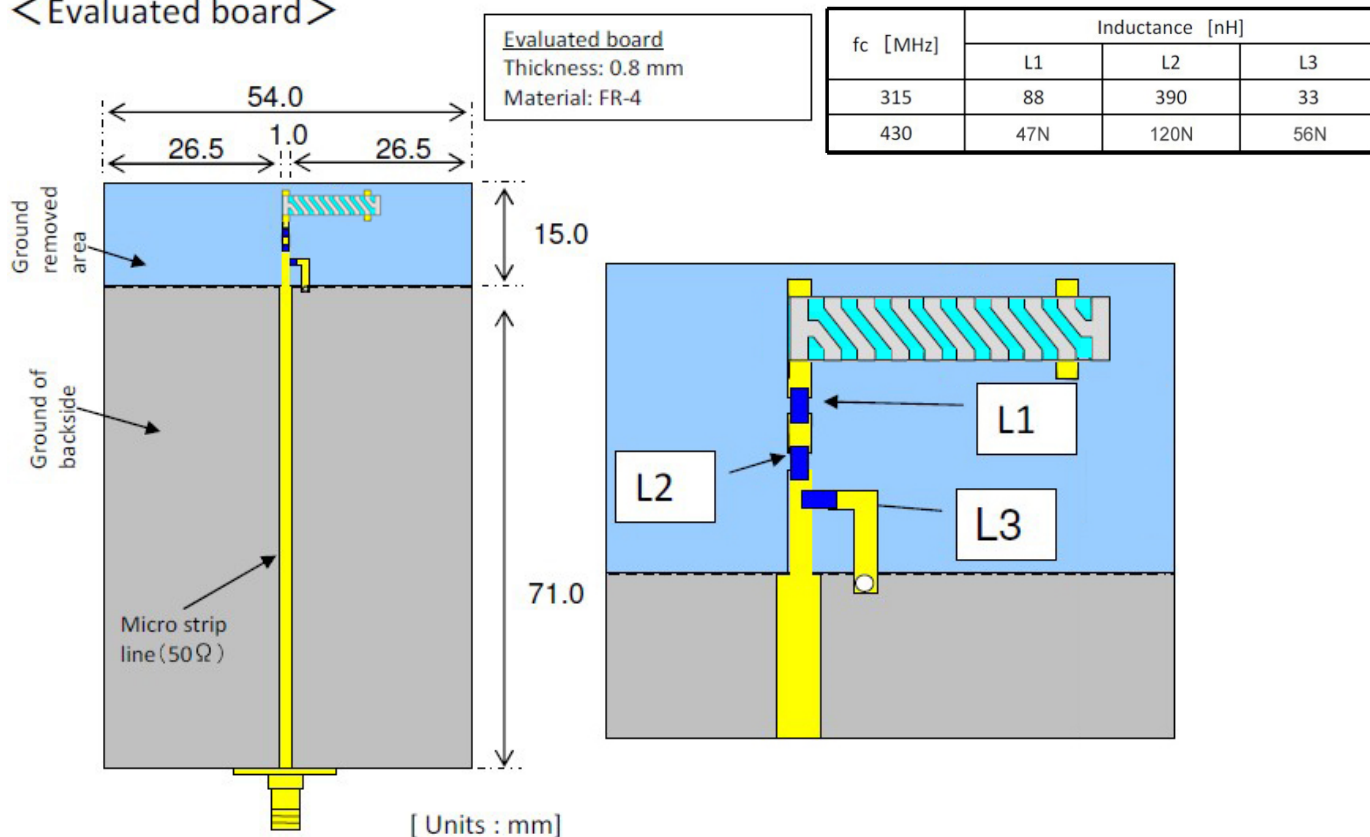
Frequency : 428~438MHz
 Impedance : 50Ω
 Dimension : 15.1×3.0×0.66mm
 Omni-directional
 High gain

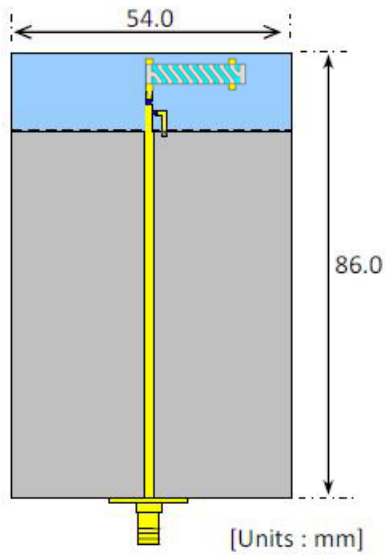
< Applications >

Telemeter (Industrial & medical use),
 Telecontrol Data communication,
 Keyless entry system, ZigBee
 Immobilizer system, Voice communication terminal,

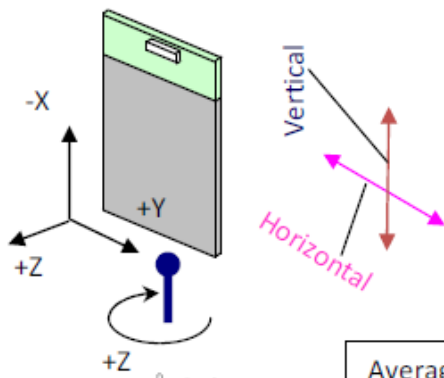
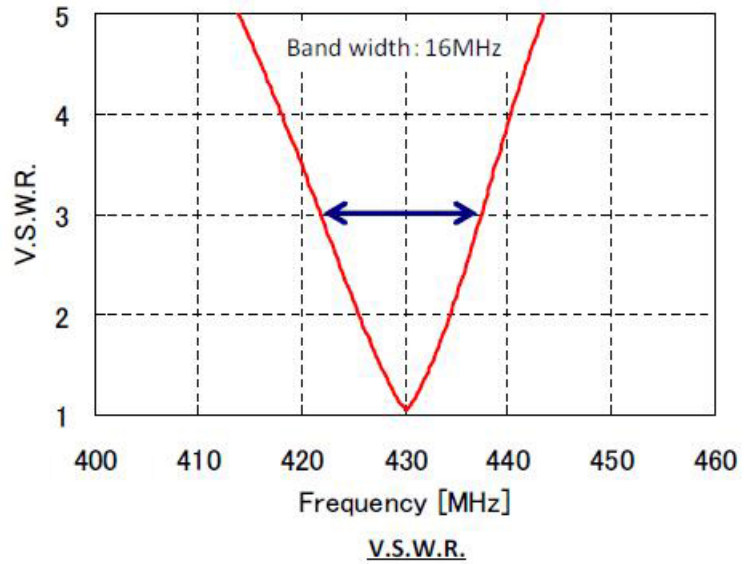


< Evaluated board >

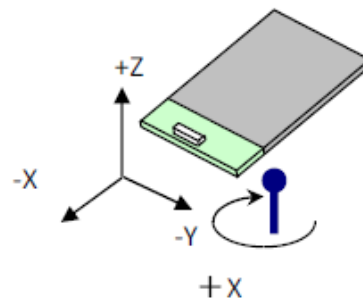
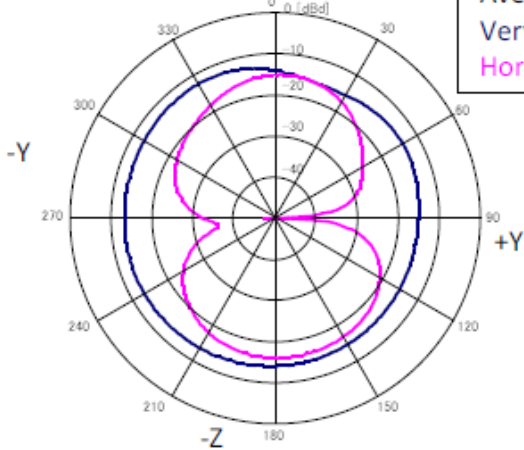




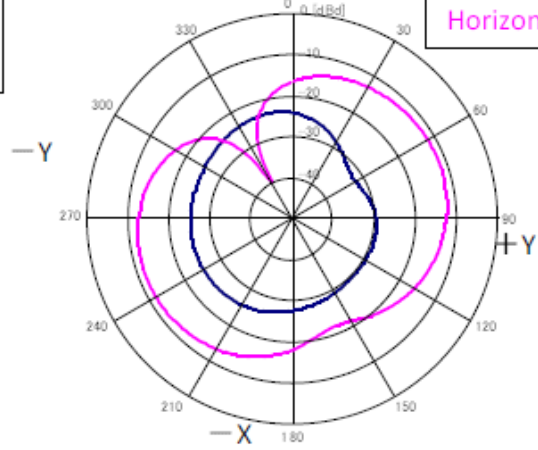
Evaluated board



Average gain (dBi)
Vertical: -11.7
Horizontal: -16.9



Average gain (dBi)
Vertical: -24.3
Horizontal: -12.3



Radiation Pattern:fc=430MHz