

---

Wireless Hi Sensitivity Receiver Module (RF ASK)

---



#### Version History

Version	Date	Changes
V1.00	May.25, 2012	1 <sup>st</sup> . Edition

**Model: RWS-371F-1 (303.875MHz)**

- Frequency Range: 303.875MHz
- Modulate Mode: ASK
- Circuit Shape: LC
- Data Rate: 4800 bps
- Selectivity: -108 dBm
- Channel Spacing:  $\pm 500\text{KHz}$
- Supply Voltage: 3.8~5.5V
- High sensitivity passive design.
- Simple to apply with low external count.

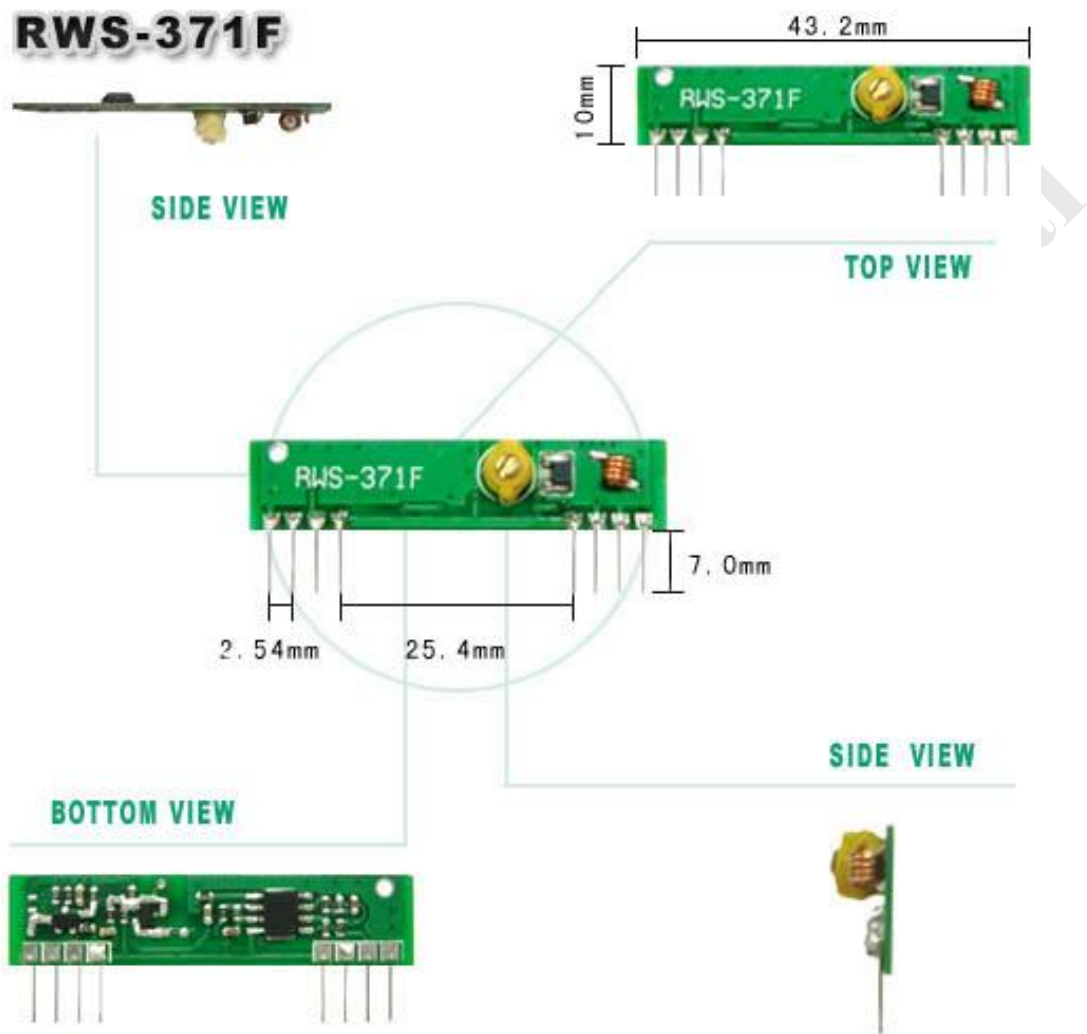
**Electrical Characteristic**

Characteristic	Sym	Min	Type	Max	Unit
Operating Radio Frequency	FC	303.325	303.875	304.325	MHz
Sensitivity	Pref.	-106	-108	-110	dBm
Channel Width		-500		+ 500	KHz
Noise Equivalent BW	NEB		5	4	
Baseband Data Rate				3	KB/S
Receiver Turn On Time				3	ms

**DC Characteristic**

Symbol	Parameter	Conditions	Min	Type	Max	Unit
V <sub>cc</sub>	Operating Supply Voltage		3.8	5	5.5	V
I <sub>Tot</sub>	Operating Supply Voltage			4.5		
V <sub>Data</sub>	Data Out	1 Data = +200uA ( High )	V <sub>cc</sub> -0.5	V <sub>cc</sub>		V
		1 Data = -10uA ( Low )			0.3	V

## Pin Assignment



## Demo Circuit

Pin	Function
1	GND
2	Digital Output
3	Linear Out
4	VCC
5	VCC
6	GND
7	GND
8	ANT(About 13cm)



<http://www.wenshing.com.tw> ; <http://www.rf.net.tw>

